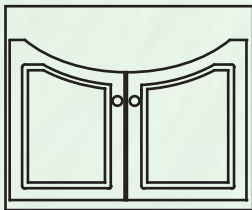


## CAUTION!

Always remove drawers and doors from your cabinets during installation and store them away from the work area. This will make your cabinets lighter, easier to move and position, and safer to handle. Plus, drawer and door faces will be protected from damage during installation.

Drawers and doors open when you don't expect it and unbalance the cabinet while you are moving it, causing injury or damage.

Damage caused during installation is not covered by warranty.



## CAUTION!

Due to the nature of a heavy fixture being mounted onto a wall, extra care must be exercised to ensure a safe and durable installation.

- ALWAYS use the Mounting Bar system to distribute the load evenly.
- ALWAYS use adequate fastening devices into adequate holding material.
- If you are not familiar with loads, holding materials, proper fastening devices, or techniques, do NOT proceed. Consult a professional.

These instructions are for installing your Wall Mount Vanity to a wall constructed of 2" X 4" wood studs covered with ½" gypsum board/sheet rock. Any other installation must be undertaken by a qualified construction specialist with knowledge of your specific application.

**Install Wall Mount Vanities using 5/16" X 3 1/2" lag screws with washers. Lag screws must engage at least two wall studs and the lag screws must not be more than 3" from cabinet sides. Otherwise, a cross member between wall studs should be installed. Consult a qualified contractor for installation.**

## Installing Wall Mount Vanities

Determine final vanity cabinet top height (excluding counter top) and center, and mark on wall. Measure down 5 1/4" to mark where the beveled Mounting Bar top edge will be on your wall. See Figure 1.

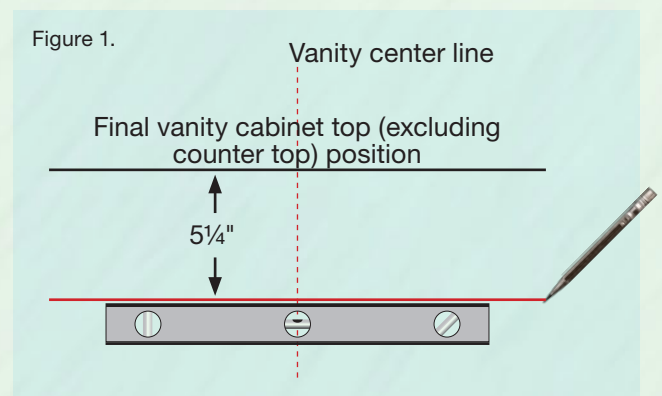
Determine side-to-side vanity position on your wall. Mounting Lag Screws for Mounting Bar and upper rear stretcher must be within 3" of vanity sides and must engage stud centers or an installed cross member. See figure 2.

Drill 3/8" holes (to allow the 5/16" lag screws to pull Mounting Bar snugly onto wall). Place the Mounting Bar in position on the wall again and mark the wall for drilling into wall studs. Drill 3/16" pilot holes for 5/16" lag screws. It is important to drill into stud center. See Figures 2 and 3, next page.

Secure the Mounting Bar to the wall. Hang the Vanity by mating the bevels of the Mounting Bar and cabinet's upper rear stretcher.

Secure the Vanity cabinet to the wall with additional lag screws through the upper and lower rear stretchers. Drill pilot holes through stretchers into stud centers. See Figures 2 and 3, next page.

Install vanity top according to industry standards.



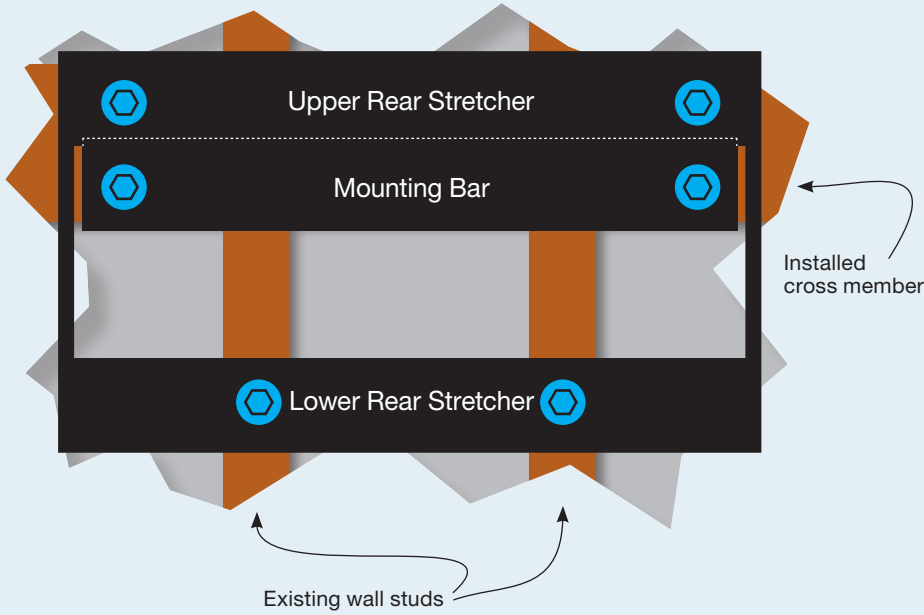


Figure 2.

Front view, looking into a Wall Mount Vanity. Cutaway showing attachment to wall studs.

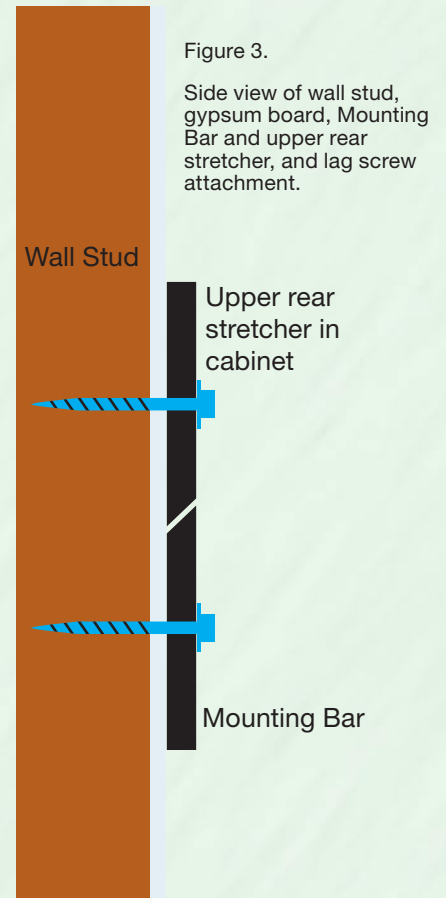


Figure 3.

Side view of wall stud, gypsum board, Mounting Bar and upper rear stretcher, and lag screw attachment.

## Re-install Doors and Drawers

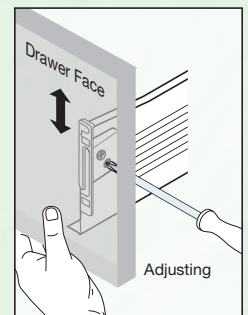
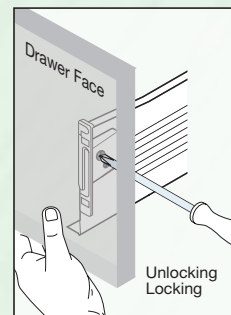
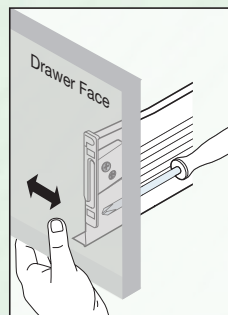
Once your cabinets are in their final positions and secured, re-install and adjust doors and drawers according to directions on the next page. You will need to peel the protective film from **Gloss White** finish doors and drawer faces.

### CAUTION!

Never stand or sit on your Wall Mount Vanity.

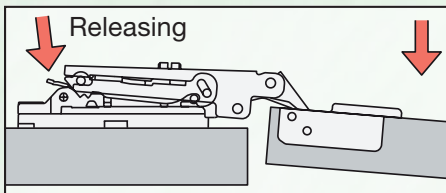
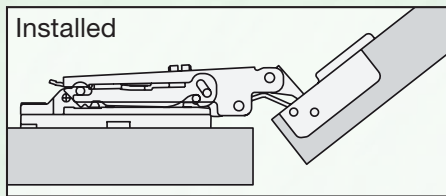
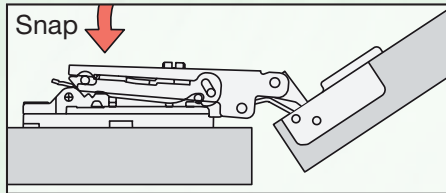
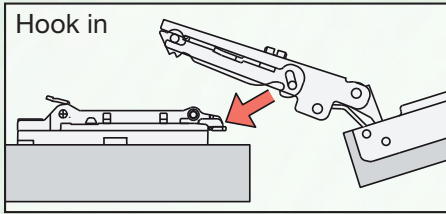
## Drawer Face Adjustment

Loosen the four drawer guide mounting screws and adjust drawer face sideways. To raise, lower, or level drawer face loosen locking screw(s) and turn adjusting screw(s), on either side or both. Remember to tighten the locking screw when done.

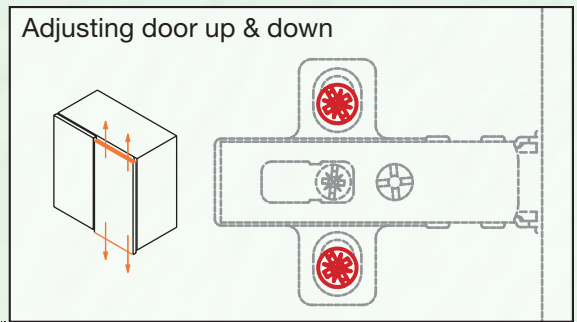


## 6-Way Adjustable Hinges

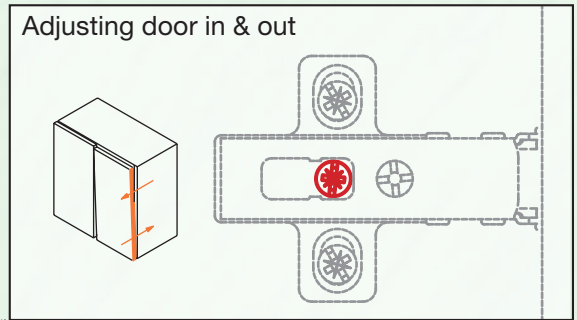
Installing, removing, and adjusting your Cabinet doors is easy with our 6-way adjustable hinges.



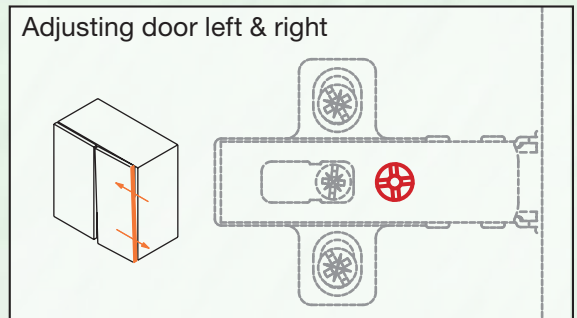
Loosen indicated screws on both hinges to adjust door up/down. **Never** adjust one hinge without also adjusting the other hinge.



Simply turn indicated screw to adjust door in/out.



Simply turn indicated screw to adjust door left/right.



## Cleaning

Use only a damp cloth to clean your Bath Cabinets.

Never use abrasive cleansers on any part of your Bath Cabinet and use only a soft cloth, never a scouring sponge.

Never use bleach, solvents (like nail polish remover), or harsh cleaners on your cabinets.

If you have questions, don't hesitate to call our Customer Service  
Toll Free 1-800-445-0494, 7AM-4PM Pacific Coast Time.

Thank you for purchasing Strasser Woodenworks Products for your bath.

Crafted in USA. Lasting a Lifetime.

